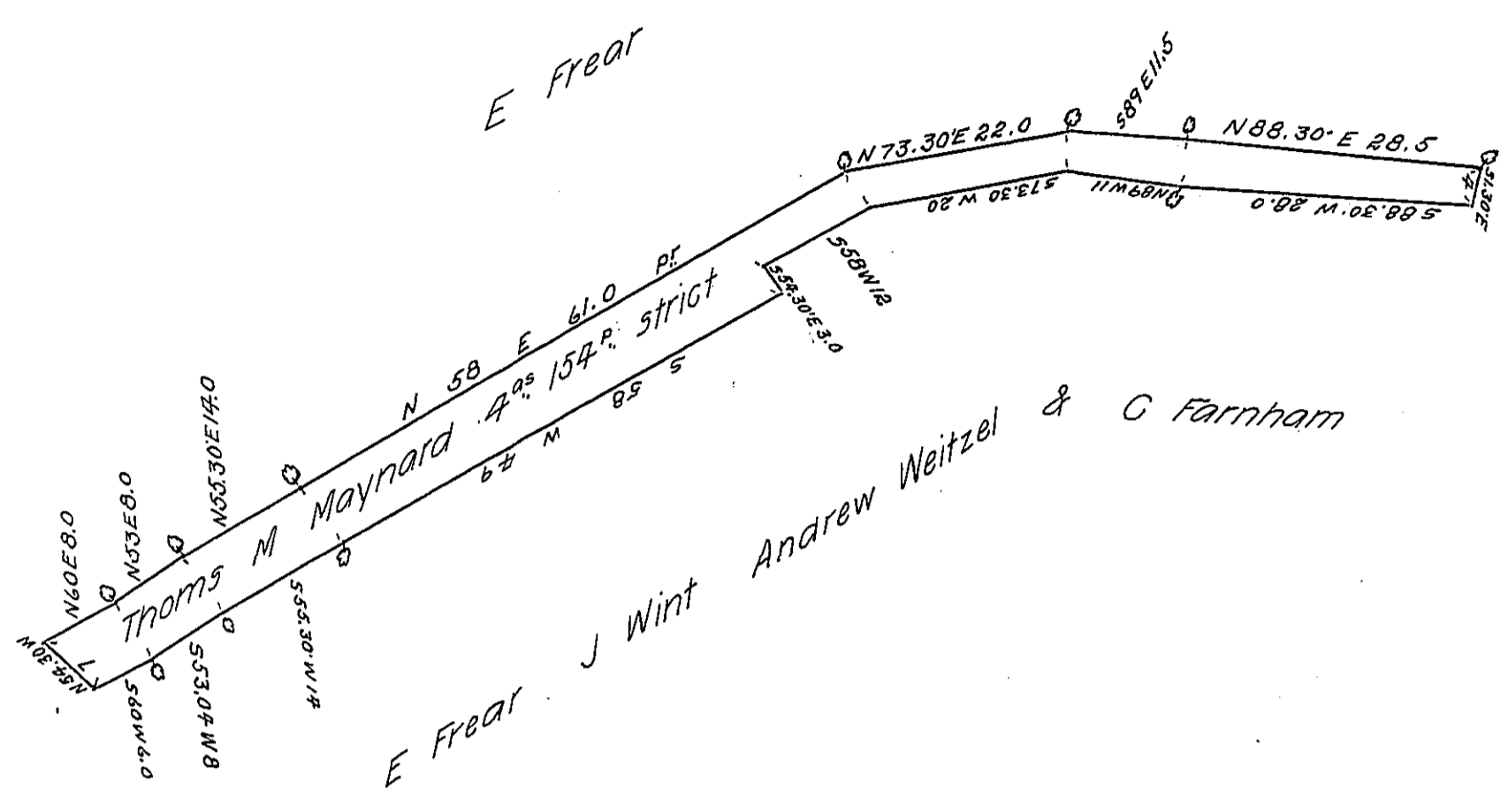


P Walch & H B Rockwell

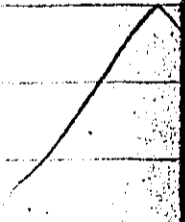


Draft of a tract of land situate in the city of Scranton County of Luzerne and state of Pennsylvania adjoining lands of F Frear P Walch & H B Rockwell on the North West and E Frear J Wint Andrew Weitzel & C Farnham on the south East containing four acres one hundred and fifty four perches strict

Surveyed the above described tract of land for Thomas M Maynard the first day of July A.D. 1873 in pursuance of his warrant dated the first day of May A.D. 1873

To Hon Robert B Beath }
Surveyor General

J. P. Weller
County Surveyor



IN TESTIMONY that the above is a copy of the original remaining on file in the Department of Internal Affairs of Pennsylvania, made conformably to an Act of Assembly approved the 16th day of February, 1833, I have hereunto set my Hand and caused the Seal of said Department to be affixed at Harrisburg, this eighteenth day of April, 1906

Isaac D. Brown
Secretary of Internal Affairs.